

■ LBS系列功率電感
LBS SERIES SMD POWER INDUCTORS

• 特征FEATURES:

- 超薄;
- 屏蔽結構;
- 適合表面貼裝。
- Low profile
- Magnetic shielded
- SMT type



• 應用APPLICATION:

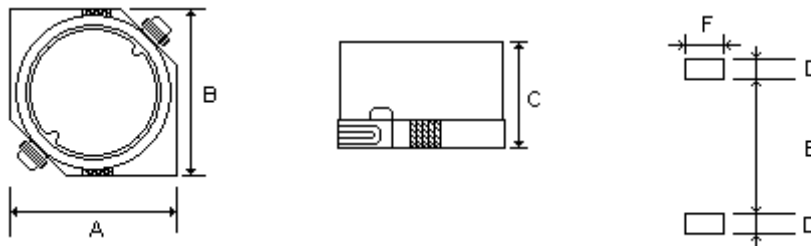
- 移動通信;
- 筆記本電腦;
- DC/DC轉換。
- Portable communication equipment
- Notebook Computer
- DC/DC converters etc.

• 產品規格型號的表示方法 ORDERING CODE

LBS 6028 — 150 M T
① ② ③ ④ ⑤

| ① 產品代號 Product Code | | ② 規格尺寸(L×W×T) Dimensions (L×W×T) (mm) | | ③ 電感量(μH) Inductance | | ④ 誤差 Tolerance | | ⑤ 包裝方式 Packaging Style | |
|------------------------|---------------|---|---------------|-------------------------|------|-------------------|------|---------------------------|-------------------|
| LBS | LBS系列 功率電感 | 6028 | 6.0×6.0×2.8 | 150 | 15 | M | ±20% | T | 卷帶盤裝 Tape&Reel |
| | | 7030 | 7.0×7.0×3.0 | 101 | 100 | N | ±30% | B | 散裝Bulk |
| | | 7045 | 7.0×7.0×4.5 | 102 | 1000 | | | | |
| | | 10145 | 10.0×10.0×4.5 | | | | | | |

• 外形尺寸 SHAPE AND DIMENSIONS



單位(Unit): mm

| 型號 Part | A | B | C | D | E | F |
|---------|----------|----------|---------|---------|---------|---------|
| 6028 | 6.0±0.2 | 6.0±0.2 | 2.8±0.2 | 1.5±0.2 | 4.0±0.2 | 2.2±0.2 |
| 7030 | 7.0±0.2 | 7.0±0.2 | 3.0±0.2 | 1.5±0.2 | 4.9±0.2 | 2.2±0.2 |
| 7045 | 7.0±0.2 | 7.0±0.2 | 4.5±0.3 | 1.5±0.2 | 4.9±0.2 | 2.2±0.2 |
| 10145 | 10.1±0.3 | 10.1±0.3 | 4.5±0.3 | 2.5±0.2 | 5.6±0.2 | 3.2±0.2 |
| 12575 | 12.5±0.3 | 12.5±0.3 | 7.5±0.3 | 2.5±0.2 | 8.6±0.2 | 3.2±0.2 |

■ 電性能參數 ELECTRICAL CHARACTERISTICS

LBS6028 Series

| 型號 Part Number | 電感量 L(μ H) | 公差 Tolerance | 測試頻率 Test Freq. | 直流電阻 DCR(Ω)Max | Isat(A) |
|-------------------|--------------------|-----------------|--------------------|----------------------------|---------|
| LBS6028-1R0NT | 1.0 | $\pm 30\%$ | 1kHz | 0.025 | 3.00 |
| LBS6028-6R8NT | 6.8 | $\pm 30\%$ | 1kHz | 0.065 | 1.50 |
| LBS6028-100MT | 10 | $\pm 20\%$ | 1kHz | 0.115 | 1.30 |
| LBS6028-150MT | 15 | $\pm 20\%$ | 1kHz | 0.150 | 1.00 |
| LBS6028-220MT | 22 | $\pm 20\%$ | 1kHz | 0.205 | 0.77 |
| LBS6028-330MT | 33 | $\pm 20\%$ | 1kHz | 0.300 | 0.69 |
| LBS6028-470MT | 47 | $\pm 20\%$ | 1kHz | 0.410 | 0.59 |
| LBS6028-680MT | 68 | $\pm 20\%$ | 1kHz | 0.575 | 0.50 |
| LBS6028-101MT | 100 | $\pm 20\%$ | 1kHz | 0.950 | 0.42 |
| LBS6028-561MT | 560 | $\pm 20\%$ | 1kHz | 5.100 | 0.12 |

Isat: 飽和電流，加Isat時，電感值相對公稱值下降 $\leq 30\%$

Isat: Saturation Current, the current when the inductance becomes 30% lower than its initial value.

LBS7030 Series

| 型號 Part Number | 電感量 L(μ H) | 公差 Tolerance | 測試頻率 Test Freq. | 直流電阻 DCR(Ω)Max | Isat(A) |
|-------------------|--------------------|-----------------|--------------------|----------------------------|---------|
| LBS7030-1R0NT | 1.0 | $\pm 30\%$ | 1kHz | 0.027 | 5.00 |
| LBS7030-4R7NT | 4.7 | $\pm 30\%$ | 1kHz | 0.052 | 1.60 |
| LBS7030-6R8NT | 6.8 | $\pm 30\%$ | 1kHz | 0.065 | 1.50 |
| LBS7030-100MT | 10 | $\pm 20\%$ | 1kHz | 0.082 | 1.30 |
| LBS7030-150MT | 15 | $\pm 20\%$ | 1kHz | 0.114 | 1.00 |
| LBS7030-220MT | 22 | $\pm 20\%$ | 1kHz | 0.183 | 0.86 |
| LBS7030-330MT | 33 | $\pm 20\%$ | 1kHz | 0.235 | 0.65 |
| LBS7030-470MT | 47 | $\pm 20\%$ | 1kHz | 0.350 | 0.57 |
| LBS7030-680MT | 68 | $\pm 20\%$ | 1kHz | 0.530 | 0.49 |
| LBS7030-101MT | 100 | $\pm 20\%$ | 1kHz | 0.843 | 0.40 |
| LBS7030-151MT | 150 | $\pm 20\%$ | 1kHz | 1.390 | 0.32 |
| LBS7030-221MT | 220 | $\pm 20\%$ | 1kHz | 1.600 | 0.26 |
| LBS7030-331MT | 330 | $\pm 20\%$ | 1kHz | 2.800 | 0.22 |
| LBS7030-471MT | 470 | $\pm 20\%$ | 1kHz | 3.500 | 0.18 |
| LBS7030-681MT | 680 | $\pm 20\%$ | 1kHz | 4.300 | 0.16 |
| LBS7030-102MT | 1000 | $\pm 20\%$ | 1kHz | 7.900 | 0.12 |

Isat: 飽和電流，加Isat時，電感值相對初始值下降 $\leq 10\%$

Isat: Saturation Current, the current when the inductance becomes 10% lower than its initial value.

LBS系列功率電感 LBS SERIES SMD POWER INDUCTORS

LBS7045 Series

| 型號 Part Number | 電感量 L(μ H) | 公差 Tolerance | 測試頻率 Test Freq. | 直流電阻 DCR(Ω)Max | Isat(A) |
|-------------------|--------------------|-----------------|--------------------|----------------------------|---------|
| LBS7045-2R2NT | 2.2 | $\pm 30\%$ | 1kHz | 0.035 | 2.80 |
| LBS7045-4R7NT | 4.7 | $\pm 30\%$ | 1kHz | 0.040 | 2.00 |
| LBS7045-6R8NT | 6.8 | $\pm 30\%$ | 1kHz | 0.048 | 1.70 |
| LBS7045-100MT | 10 | $\pm 20\%$ | 1kHz | 0.058 | 1.30 |
| LBS7045-150MT | 15 | $\pm 20\%$ | 1kHz | 0.065 | 1.10 |
| LBS7045-220MT | 22 | $\pm 20\%$ | 1kHz | 0.090 | 0.90 |
| LBS7045-330MT | 33 | $\pm 20\%$ | 1kHz | 0.098 | 0.82 |
| LBS7045-470MT | 47 | $\pm 20\%$ | 1kHz | 0.206 | 0.75 |
| LBS7045-680MT | 68 | $\pm 20\%$ | 1kHz | 0.283 | 0.60 |
| LBS7045-101MT | 100 | $\pm 20\%$ | 1kHz | 0.350 | 0.50 |
| LBS7045-151MT | 150 | $\pm 20\%$ | 1kHz | 0.445 | 0.40 |
| LBS7045-221MT | 220 | $\pm 20\%$ | 1kHz | 0.595 | 0.33 |
| LBS7045-331MT | 330 | $\pm 20\%$ | 1kHz | 0.912 | 0.25 |
| LBS7045-471MT | 470 | $\pm 20\%$ | 1kHz | 1.330 | 0.22 |
| LBS7045-681MT | 680 | $\pm 20\%$ | 1kHz | 2.020 | 0.20 |
| LBS7045-152MT | 1500 | $\pm 20\%$ | 1kHz | 3.800 | 0.10 |

LBS10145 Series

| 型號 Part Number | 電感量 L(μ H) | 公差 Tolerance | 測試頻率 Test Freq. | 直流電阻 DCR(Ω)Max | Isat(A) |
|-------------------|--------------------|-----------------|--------------------|----------------------------|---------|
| LBS10145-1R5NT | 1.5 | $\pm 30\%$ | 1kHz | 0.016 | 8.30 |
| LBS10145-150MT | 15 | $\pm 20\%$ | 1kHz | 0.067 | 2.40 |
| LBS10145-220MT | 22 | $\pm 20\%$ | 1kHz | 0.073 | 2.10 |
| LBS10145-330MT | 33 | $\pm 20\%$ | 1kHz | 0.135 | 1.60 |
| LBS10145-470MT | 47 | $\pm 20\%$ | 1kHz | 0.175 | 1.40 |
| LBS10145-680MT | 68 | $\pm 20\%$ | 1kHz | 0.249 | 1.20 |
| LBS10145-101MT | 100 | $\pm 20\%$ | 1kHz | 0.460 | 1.00 |
| LBS10145-151MT | 150 | $\pm 20\%$ | 1kHz | 0.606 | 0.79 |
| LBS10145-221MT | 220 | $\pm 20\%$ | 1kHz | 0.787 | 0.65 |
| LBS10145-331MT | 330 | $\pm 20\%$ | 1kHz | 1.350 | 0.54 |
| LBS10145-471MT | 470 | $\pm 20\%$ | 1kHz | 1.800 | 0.47 |
| LBS10145-681MT | 680 | $\pm 20\%$ | 1kHz | 2.790 | 0.38 |
| LBS10145-102MT | 1000 | $\pm 20\%$ | 1kHz | 4.320 | 0.32 |
| LBS10145-202MT | 2000 | $\pm 20\%$ | 1kHz | 6.150 | 0.18 |

Isat: 飽和電流，加Isat時，電感值相對初始值下降 $\leq 10\%$

Isat: Saturation Current, the current when the inductance becomes 10% lower than its initial value.

LBS12575 Series

| 型號 Part Number | 電感量 L(μH) | 公差 Tolerance | 測試頻率 Test Freq. | 直流電阻 DCR(Ω)Max | Isat(A) |
|-------------------|--------------|-----------------|--------------------|-------------------|---------|
| LBS12575-1R2NT | 1.2 | ± 30% | 1kHz | 0.0132 | 13.0 |
| LBS12575-2R7NT | 2.7 | ± 30% | 1kHz | 0.0156 | 10.0 |
| LBS12575-3R9NT | 3.9 | ± 30% | 1kHz | 0.0168 | 9.0 |
| LBS12575-4R7NT | 4.7 | ± 30% | 1kHz | 0.0185 | 8.4 |
| LBS12575-6R8NT | 6.8 | ± 30% | 1kHz | 0.0192 | 7.2 |
| LBS12575-100MT | 10 | ± 20% | 1kHz | 0.0228 | 5.5 |
| LBS12575-120MT | 12 | ± 20% | 1kHz | 0.0276 | 5.1 |
| LBS12575-150MT | 15 | ± 20% | 1kHz | 0.0322 | 4.7 |
| LBS12575-220MT | 22 | ± 20% | 1kHz | 0.0396 | 4.0 |
| LBS12575-330MT | 33 | ± 20% | 1kHz | 0.0580 | 3.2 |
| LBS12575-470MT | 47 | ± 20% | 1kHz | 0.0690 | 2.7 |
| LBS12575-680MT | 68 | ± 20% | 1kHz | 0.0934 | 2.0 |
| LBS12575-101MT | 100 | ± 20% | 1kHz | 0.1500 | 1.9 |
| LBS12575-151MT | 150 | ± 20% | 1kHz | 0.2100 | 1.5 |
| LBS12575-221MT | 220 | ± 20% | 1kHz | 0.3096 | 1.3 |
| LBS12575-331MT | 330 | ± 20% | 1kHz | 0.4080 | 1.0 |
| LBS12575-471MT | 470 | ± 20% | 1kHz | 0.7200 | 0.8 |
| LBS12575-681MT | 680 | ± 20% | 1kHz | 1.0200 | 0.7 |

Isat: 飽和電流，加Isat時，電感值相對初始值下降 ≤ 15%

Isat: Saturation Current, the current when the inductance becomes 15% lower than its initial value.